

**Hacking the Soul
– Neurobiology
of Occult Rituals**

HOW MAGICK works?

On the eve of the great undertaking you will search for a rod or wand of wild hazel tree that has not yet born fruit, at the highest point of the sought-after branch there should be a second little branch in the form of a fork with two ends; its length should be nineteen and a half inches.

After having found a branch of this shape, only look at it but abstain from touching it, waiting for the following day, a day destined for action, in which you will go and cut it precisely at sunrise, and denude it of its leaves and small twigs, if there are any of these and with the same blade that was used to skin the sacrifice, which will still be tainted with its blood; you will cut it when the Sun starts to break forth on this hemisphere, pronouncing the following words:

“I beseech you, O great ADONAY, ELOHIM, ARIEL and JEHOVA to be favorable and to give this rod that I am cutting the strength of Jacob and the virtue of Moses and that of the great Joshua; and I beseech you, O great ADONAY, ELOHIM, ARIEL and JEHOVA to enclose in this rod all the power of Samson, the righteous rage of Emmanuel and the Thunderbolt of ZARIATNATMICK who will avenge man’s affronts on the day of Judgement.”

After having pronounced these great and terrible words, always keeping your eyes turned toward the rising sun, cut the branch and take it to your room, then take a piece of wood that is of the same thickness as the two ends of the rod and take it to a Smith to cap the two ends of the fork with the steel blade that was used to skin the sacrifice, ensuring that the two blades are sharp and when they are fitted to the two pieces of wood, take them home, putting the two irons on the true rod yourself, then take a Lodestone, heat it in the fire to magnetize the points of the rod pronouncing the following words:

“By the power of the great ADONAY, ELOHIM, ARIEL and JEHOVA, I beseech you to unite all of the materials that I desire by the power of the great

ADONAY, ELOHIM, ARIEL and JEHOVA I command you by the incorruptibility of water and fire, to separate all of the materials as they were separated the day of the creation of the world. Amen.”

Grand Grimoire

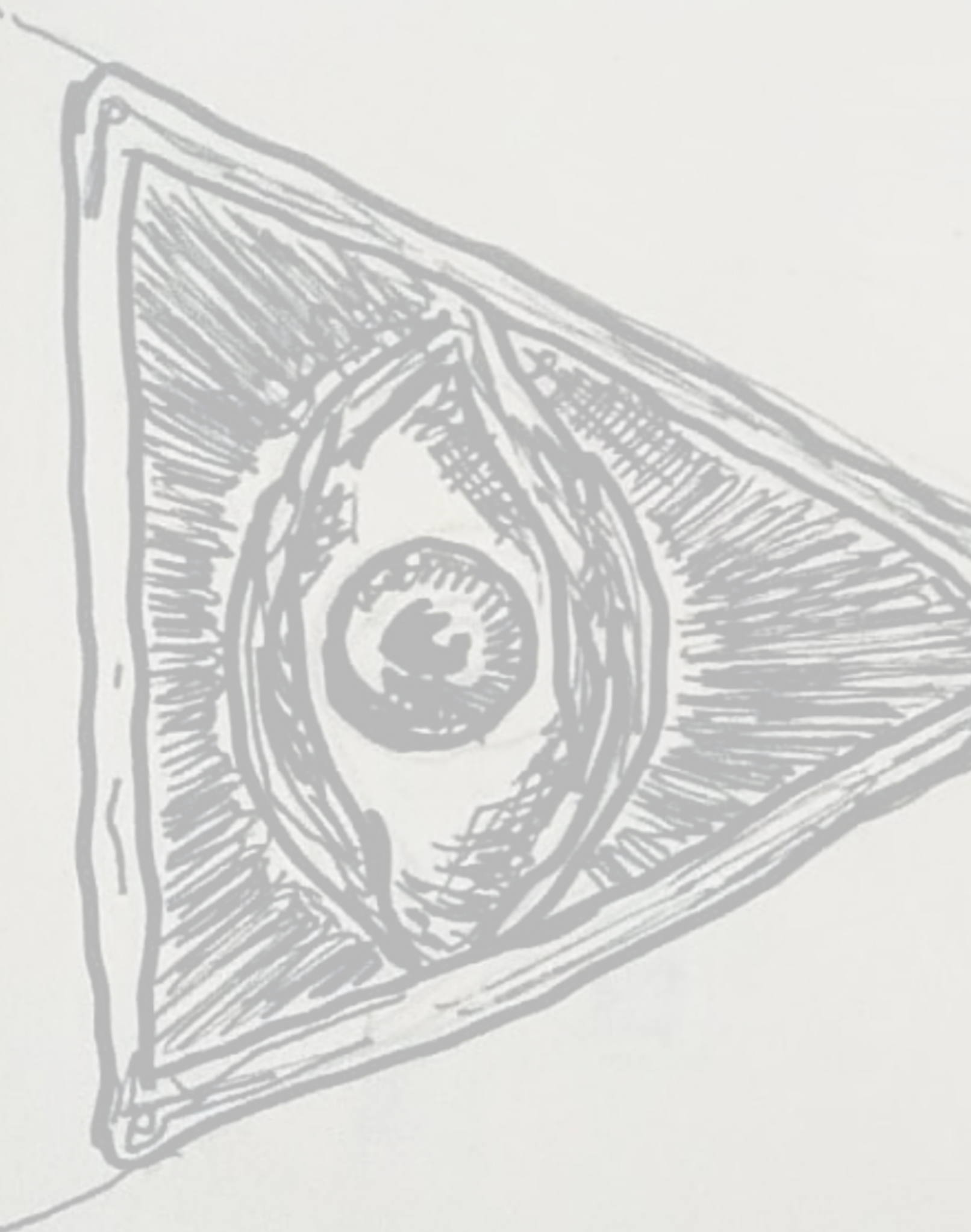






GRAND GRIMOIRE

illustrated by
ottoich



▷ LIBER NULL

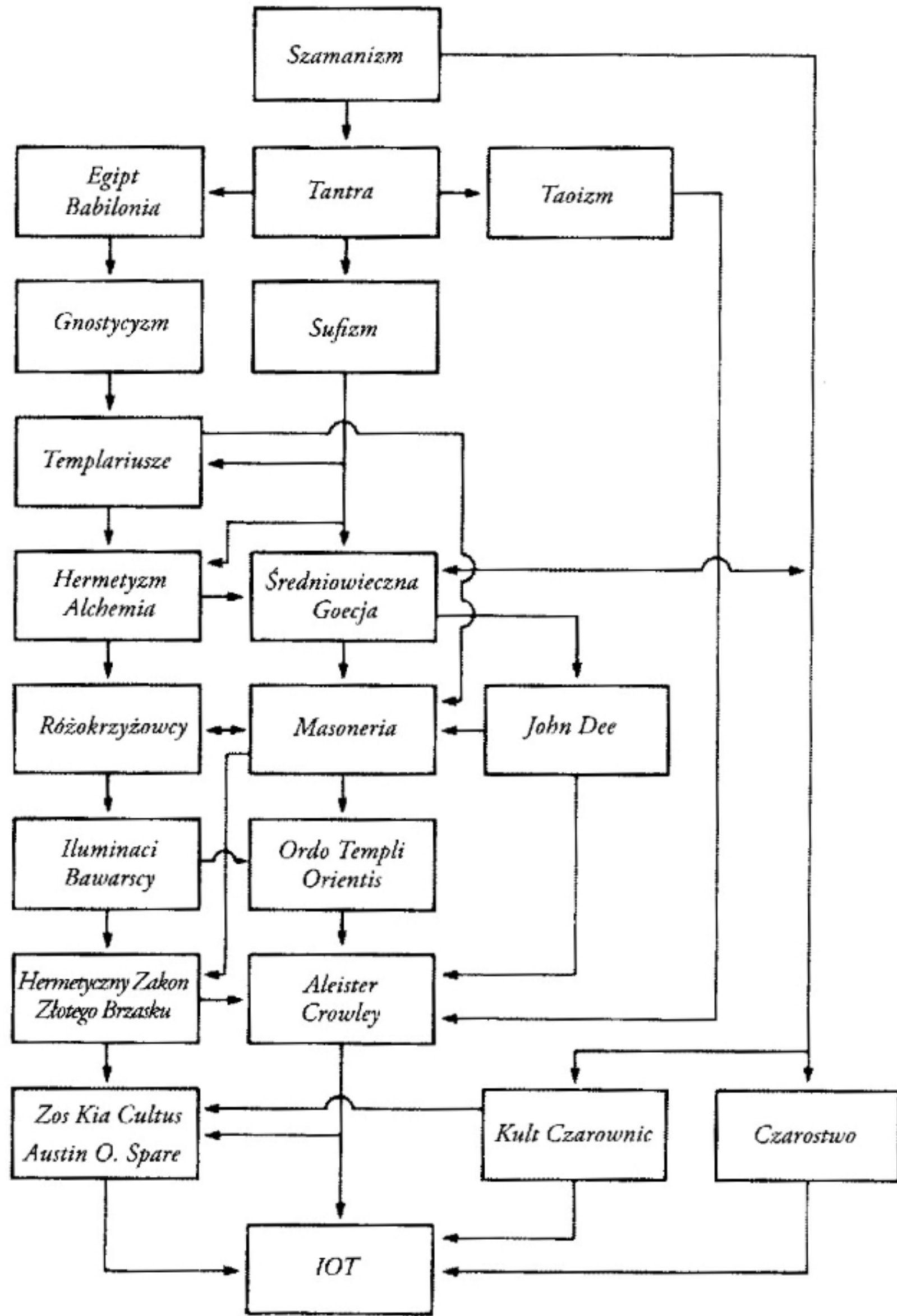
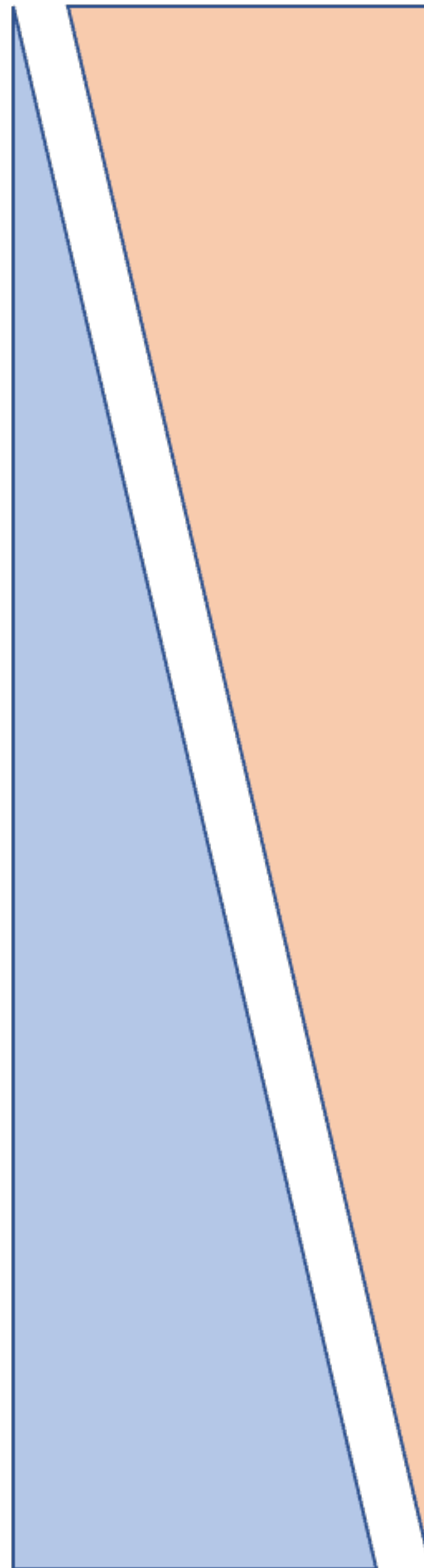


Diagram 1. Ewolucja tradycji magicznej.
Liber Null & Psychonaut: The Practice of Chaos Magic; Peter J Carroll

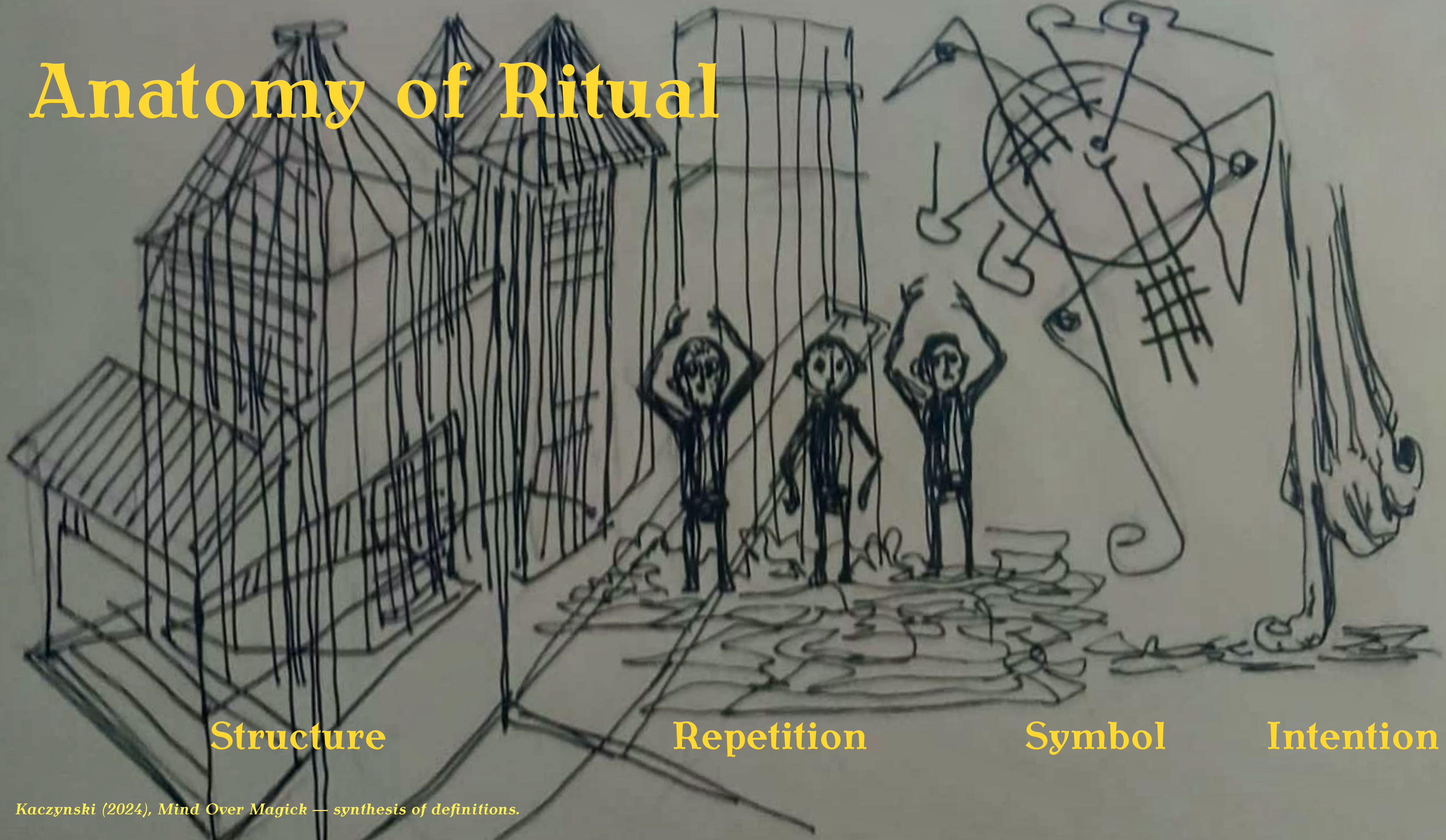
Follow the instruction



No instructions,
barriers, creationism



Anatomy of Ritual



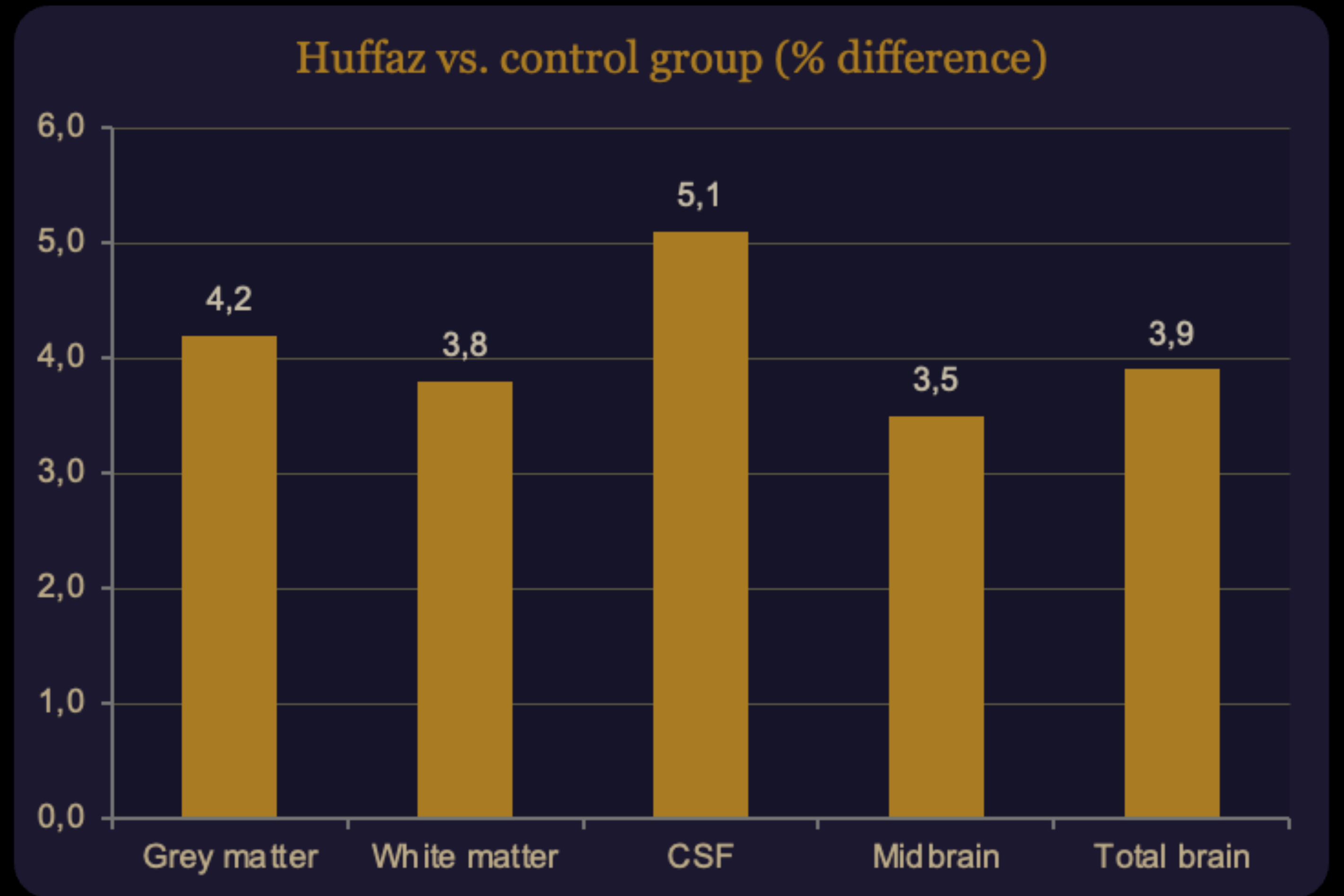
Structure

Repetition

Symbol

Intention

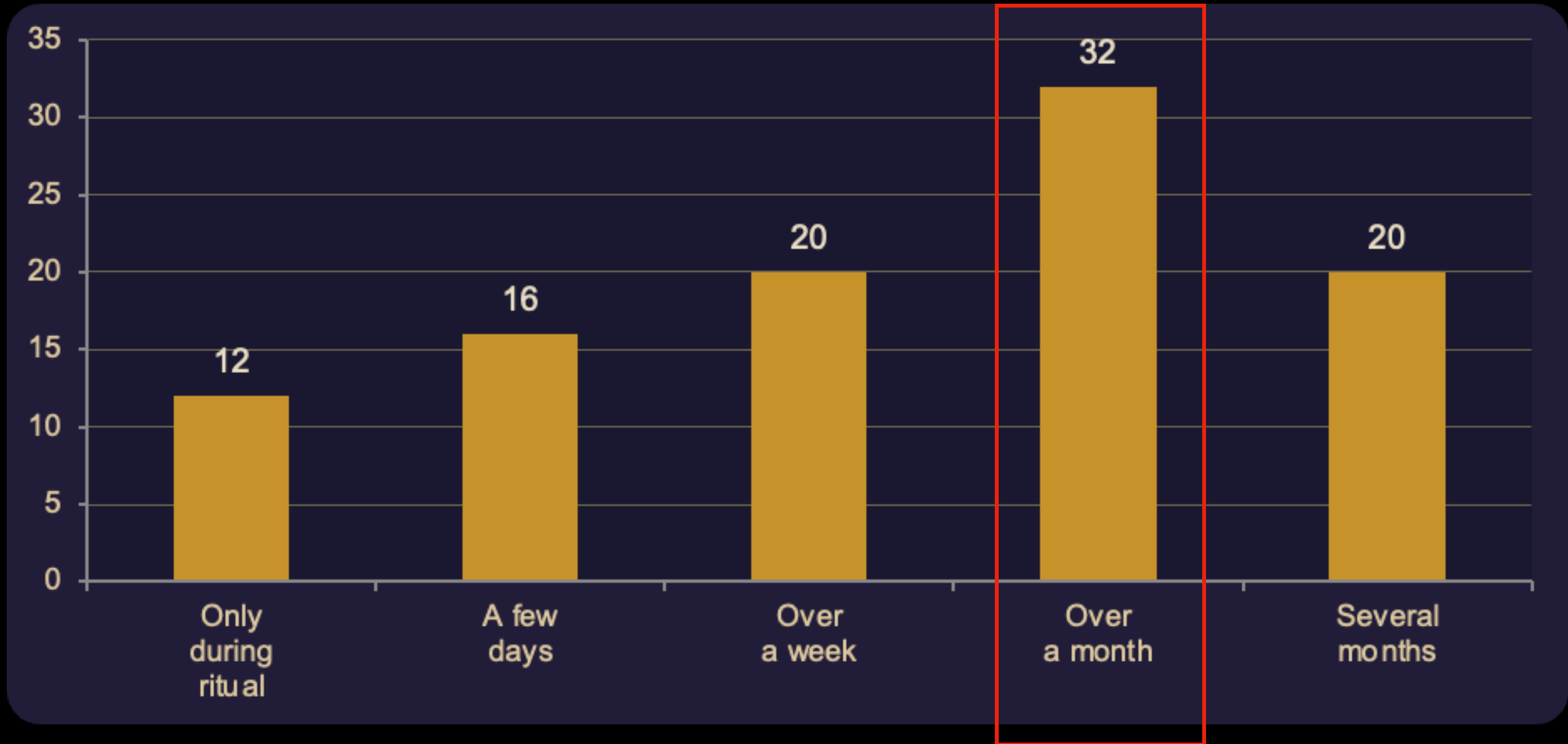
"Carve the formula into memory and your grey matter will obey."



+5.1%

**larger brain in those who memorised the entire long
formula**

**delays decline
in cognitive function**



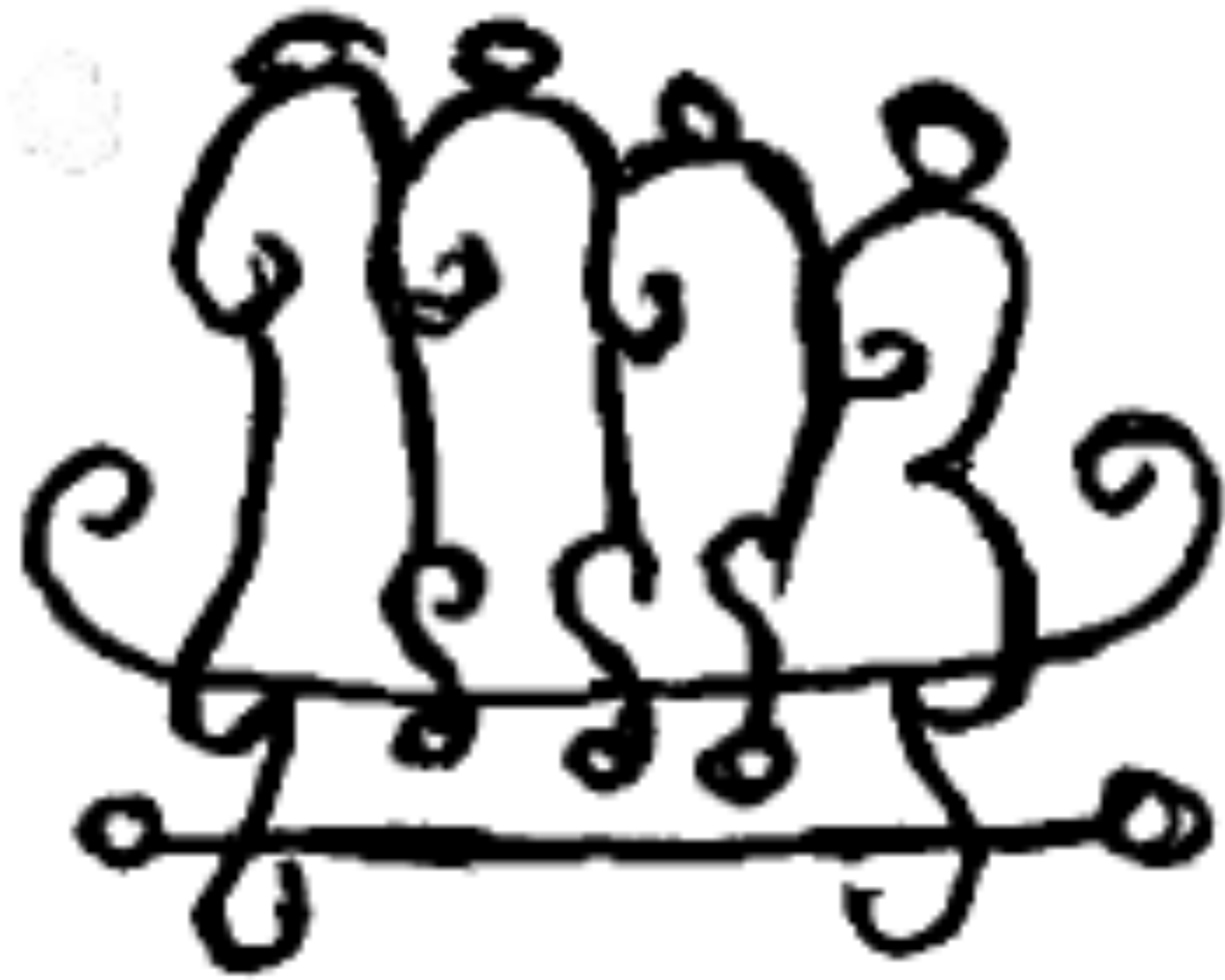
Kaczynski (2024), Mind Over Magick — synthesis of definitions.

Jacobs, J. L. (1989). The effects of ritual healing on female victims of abuse. Sociological Analysis, 50(3).

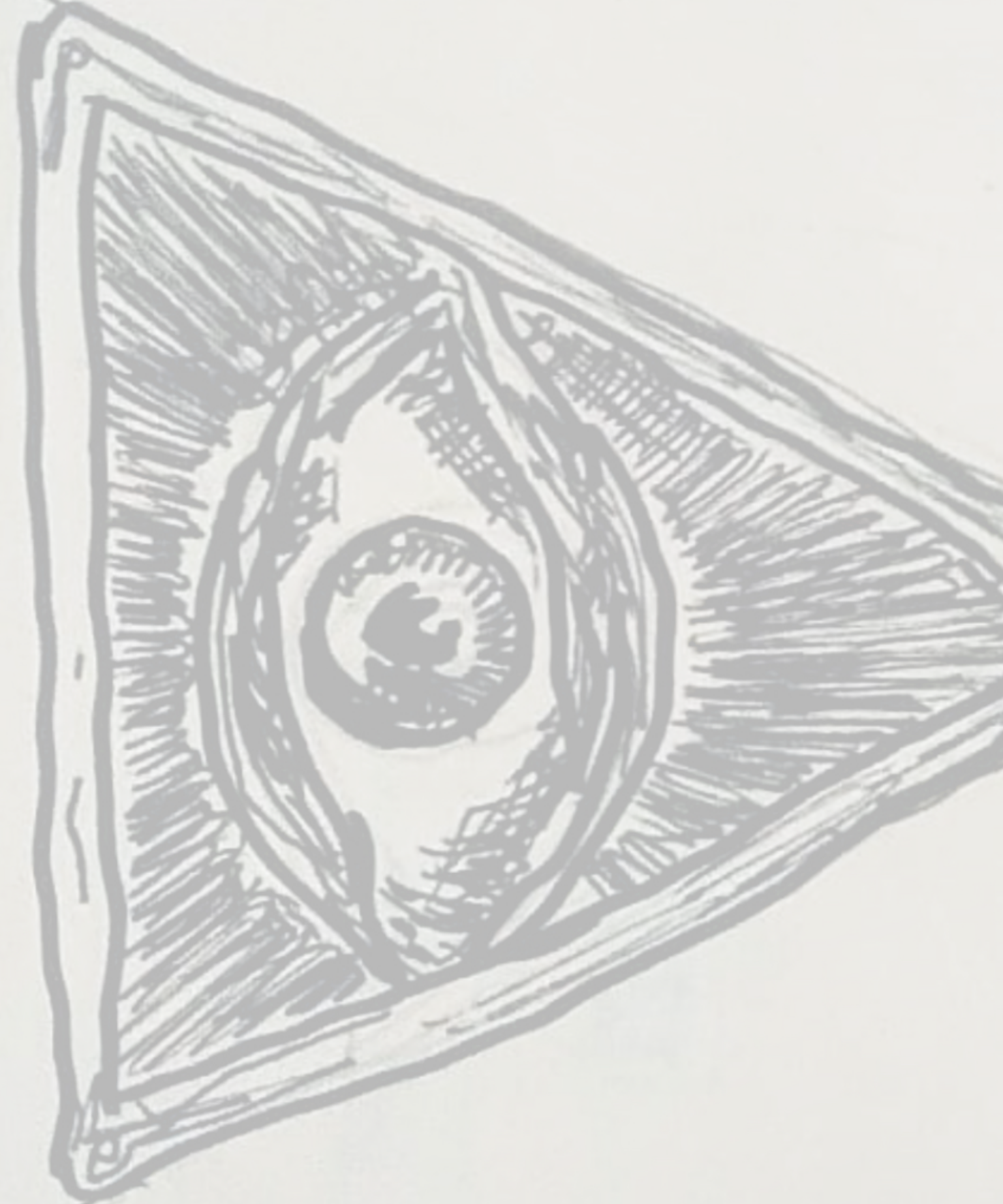
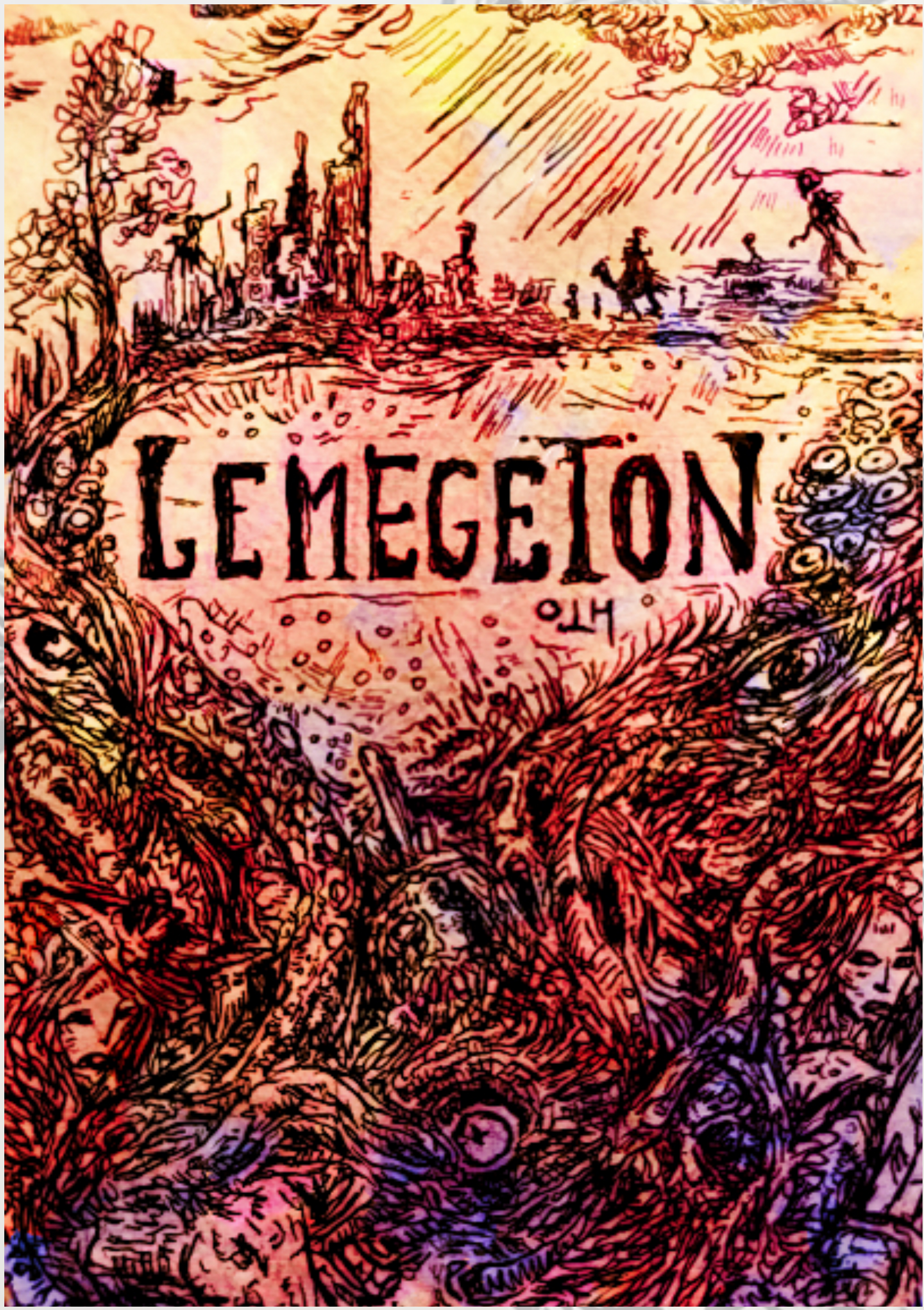


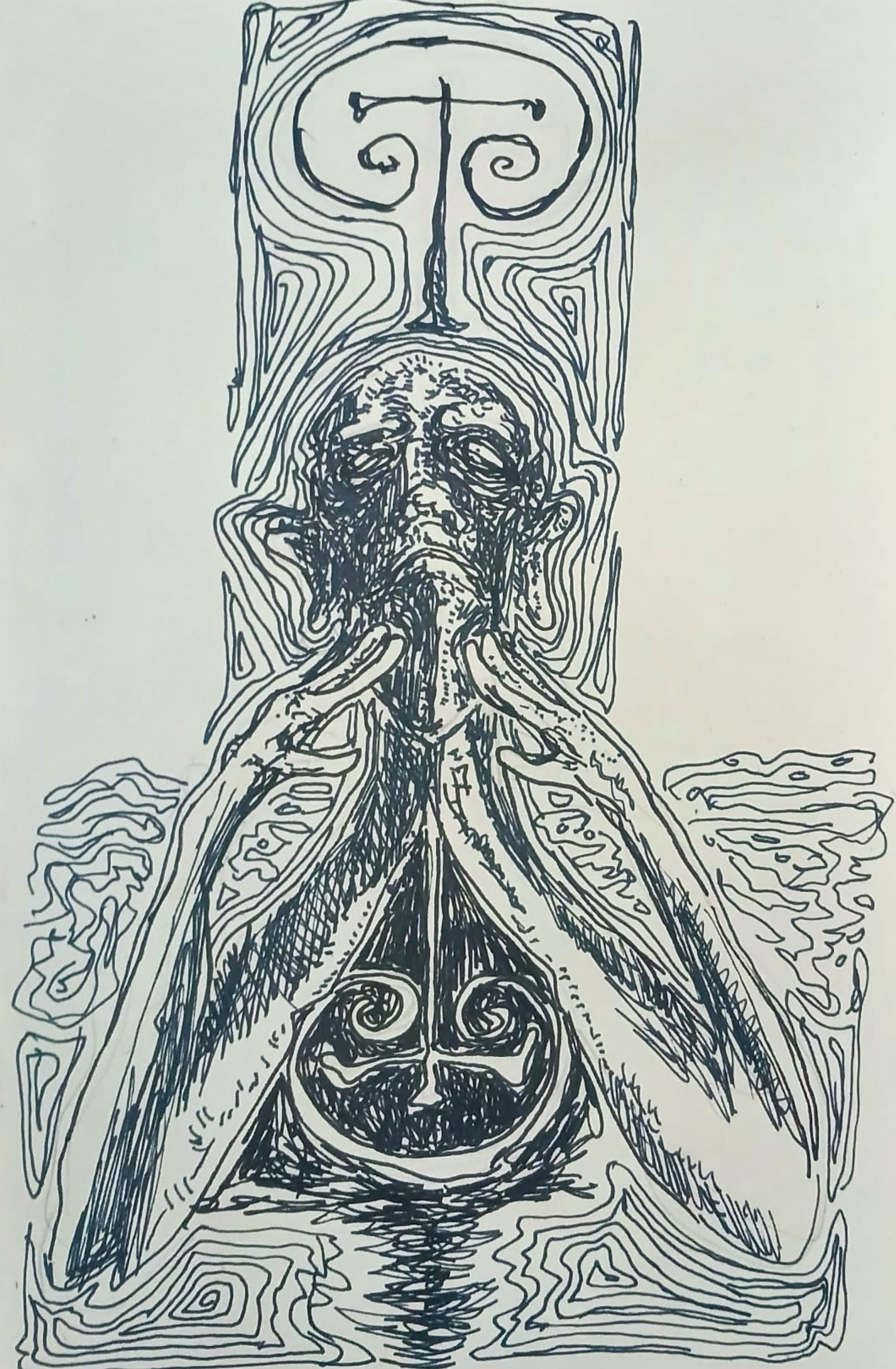
ANXIETY REDUCTION

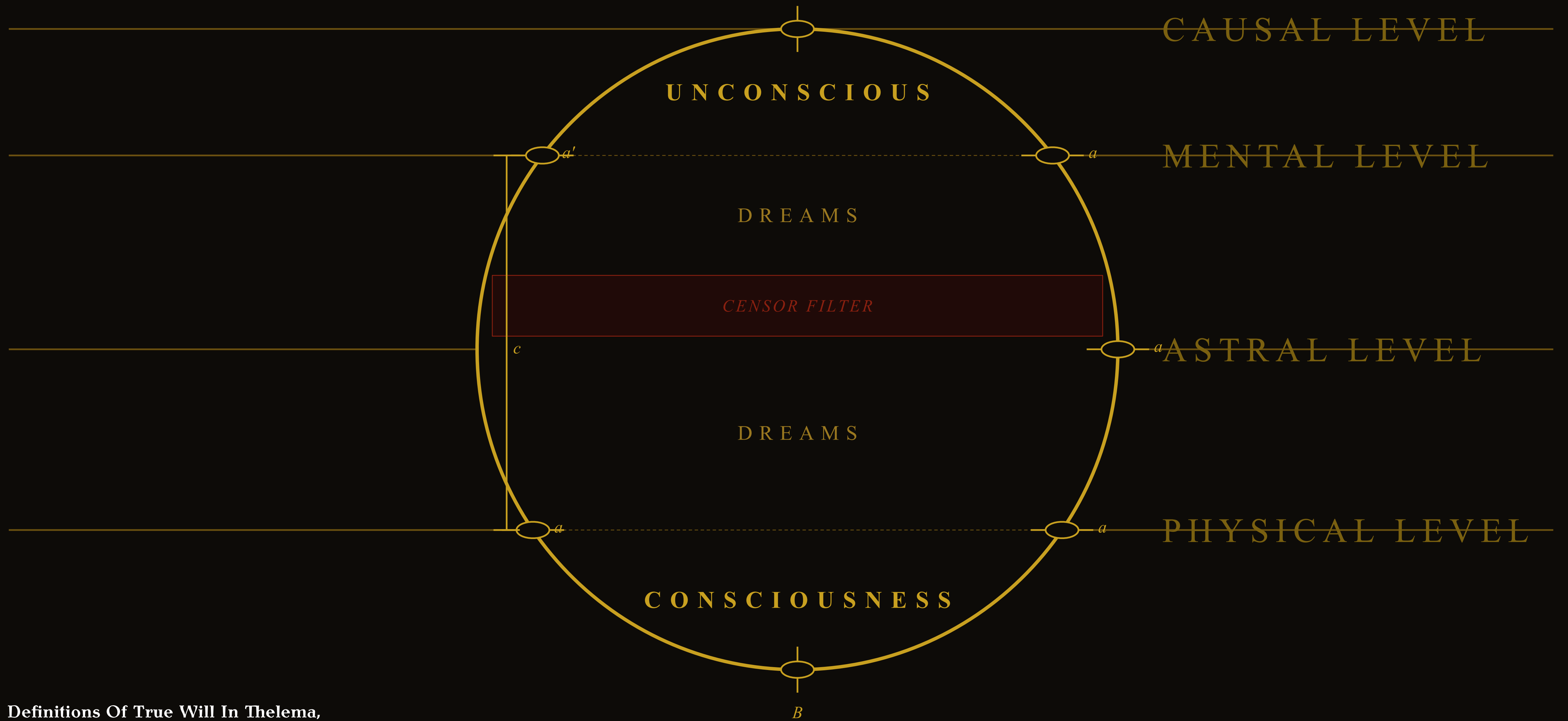
*Kaczynski (2024), Mind Over Magick — synthesis of definitions.
Brooks, A. W. et al. (2016). Don't stop believing: Rituals improve performance by decreasing anxiety. Organ. Behavior & Human Decision Processes, 137.*



Lesser Key of Salomon







Definitions Of True Will In Thelema,
<https://thelemicunion.com/3-definitions-true-will-thelema/>

But How Does It Works

Last Updated on Fri, 06 Jan 2023 | [Sigil Magick, https://www.spellsandmagic.org/sigil-magick/but-how-does-it-work.html](https://www.spellsandmagic.org/sigil-magick/but-how-does-it-work.html)

FORGET
drop monitoring
= strategic automation

CHARGE IN Gnosis
altered state
= emotional encoding

ENCODE
letters → glyph
= if-then encoding

INTENT
"I desire X"
= goal intention



CAUSAL LEVEL

MENTAL LEVEL

ASTRAL LEVEL

PHYSICAL LEVEL

Definitions Of True Will In Thelema,
<https://thelemicunion.com/3-definitions-true-will-thelema/>
 But How Does It Works
 Last Updated on Fri, 06 Jan 2023 | [Sigil Magick](https://www.spellsandmagic.org/sigil-magick/but-how-does-it-work.html), <https://www.spellsandmagic.org/sigil-magick/but-how-does-it-work.html>
 Carroll (1987). *Liber Null & Psychonaut*. Weiser.
 Gollwitzer (1999). *Am. Psychologist*, 54(7), 493–503.
 Gollwitzer & Sheeran (2006). *Adv. Exp. Soc. Psych.*, 38, 69–119.

Many doors to gnosis, one neural room

INHIBITORY PATH

- Meditation
- Sensory deprivation
- Fasting
- Death posture
- Hypnotic trance

EXCITATORY PATH

- Dance / drumming
- Pain / fear
- Sexual climax
- Psychedelics
- Hyperventilation

CONVERGENT NEURAL SIGNATURE

DMN ↓ • prefrontal control ↓ • plasticity ↑ • suggestibility ↑



Implementation Intentions and Goal Achievement: A Meta-analysis of Effects and Processes

Peter M. Gollwitzer, Paschal Sheeran

[Show more](#) ✓

ENCODE

letters → glyph
= if-then encoding

INTENT

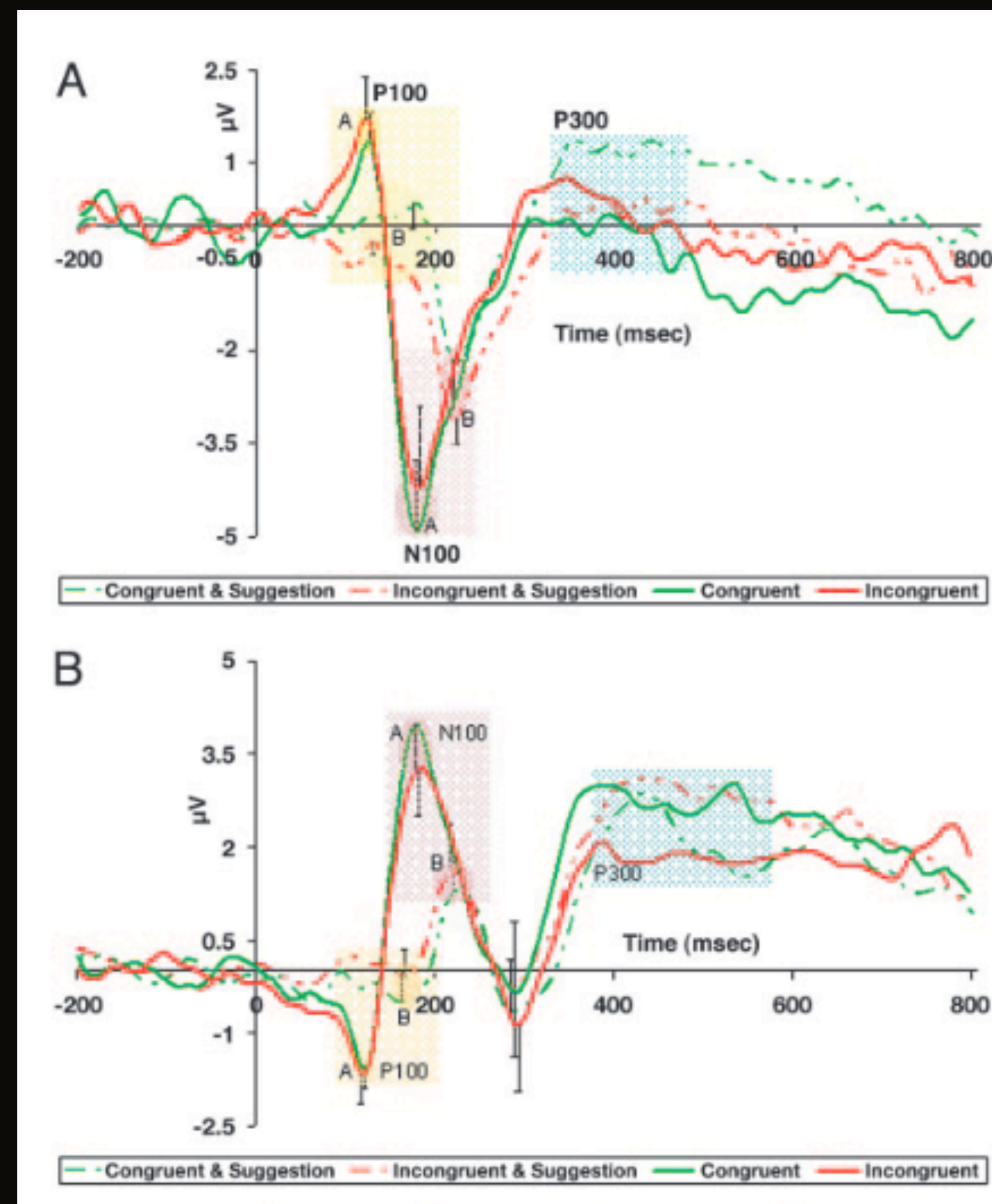
"I desire X"
= goal intention

ENCODE

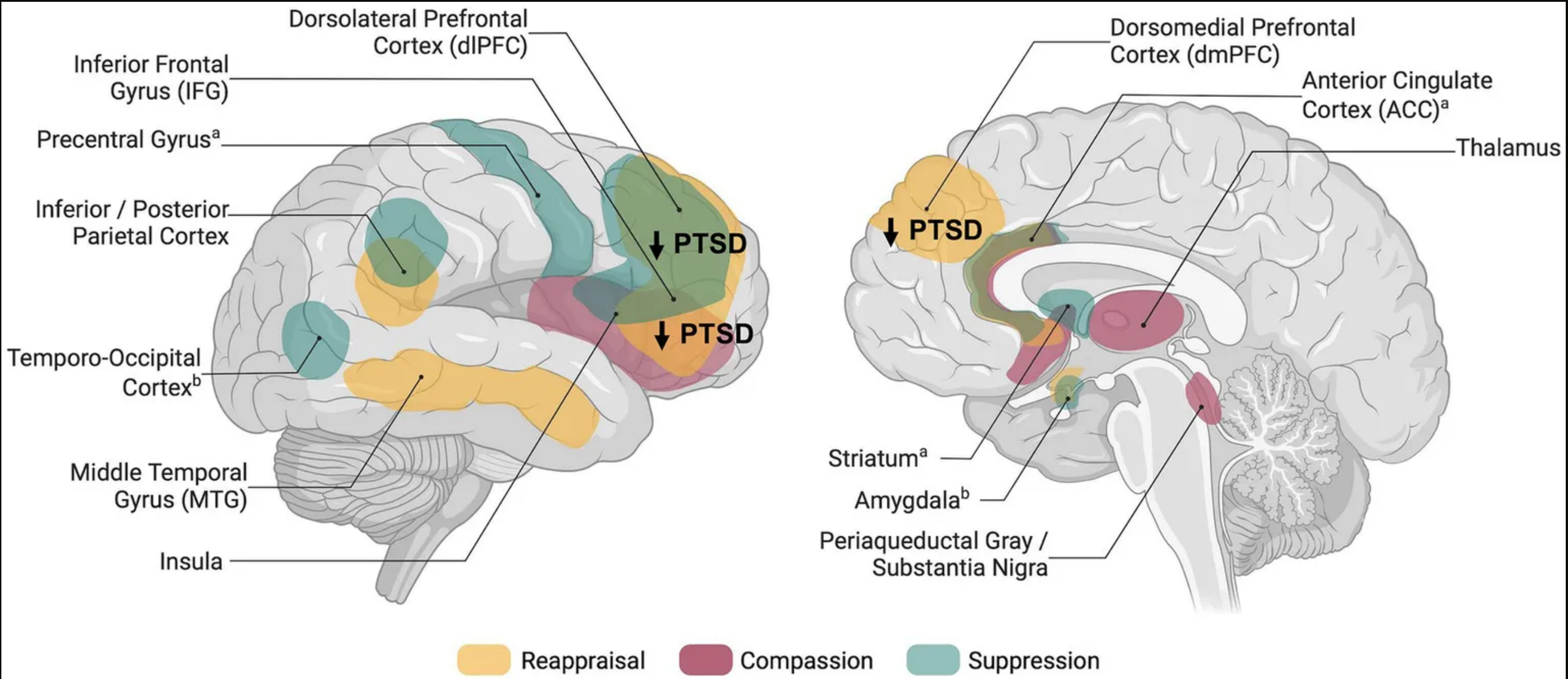
letters → glyph
= if-then encoding

INTENT

"I desire X"
= goal intention

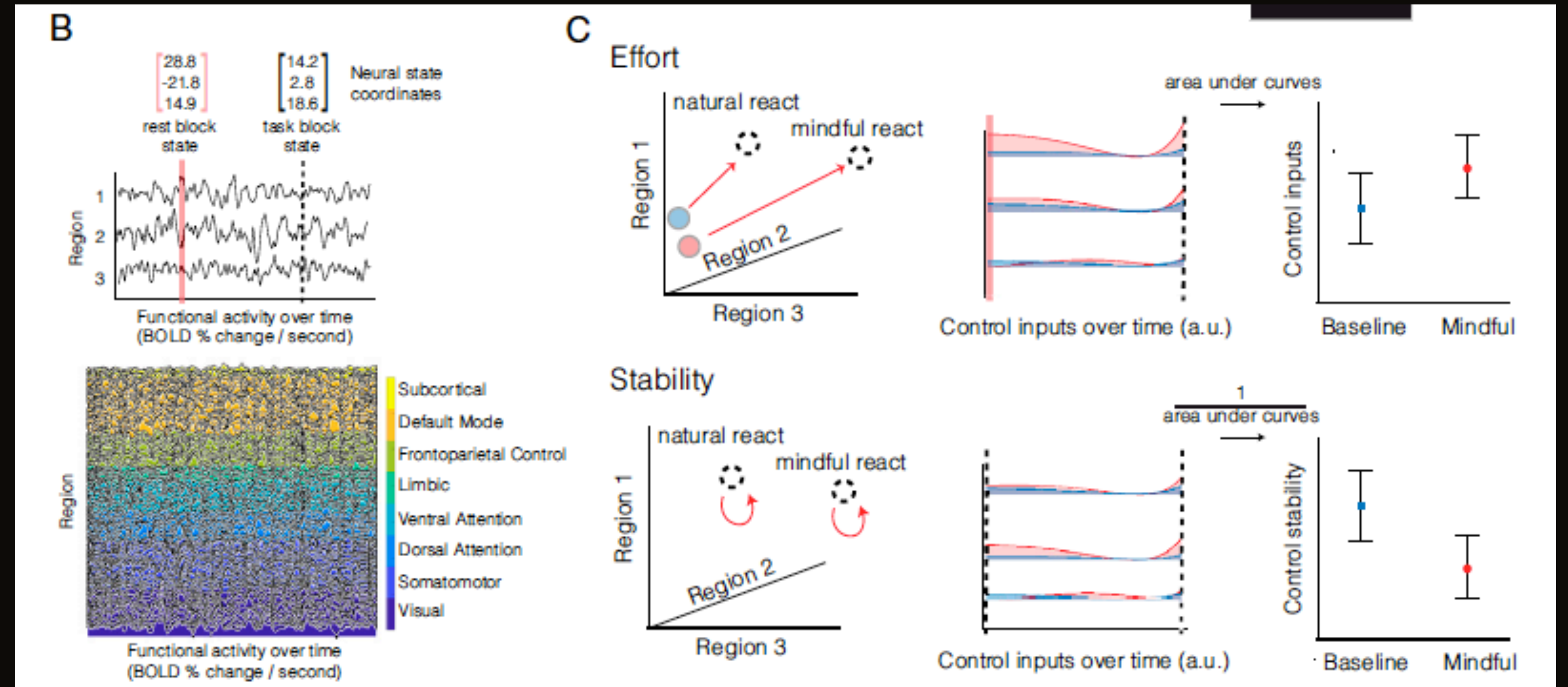


CHARGE IN GNOSIS
 altered state
 = emotional encoding



FORGET

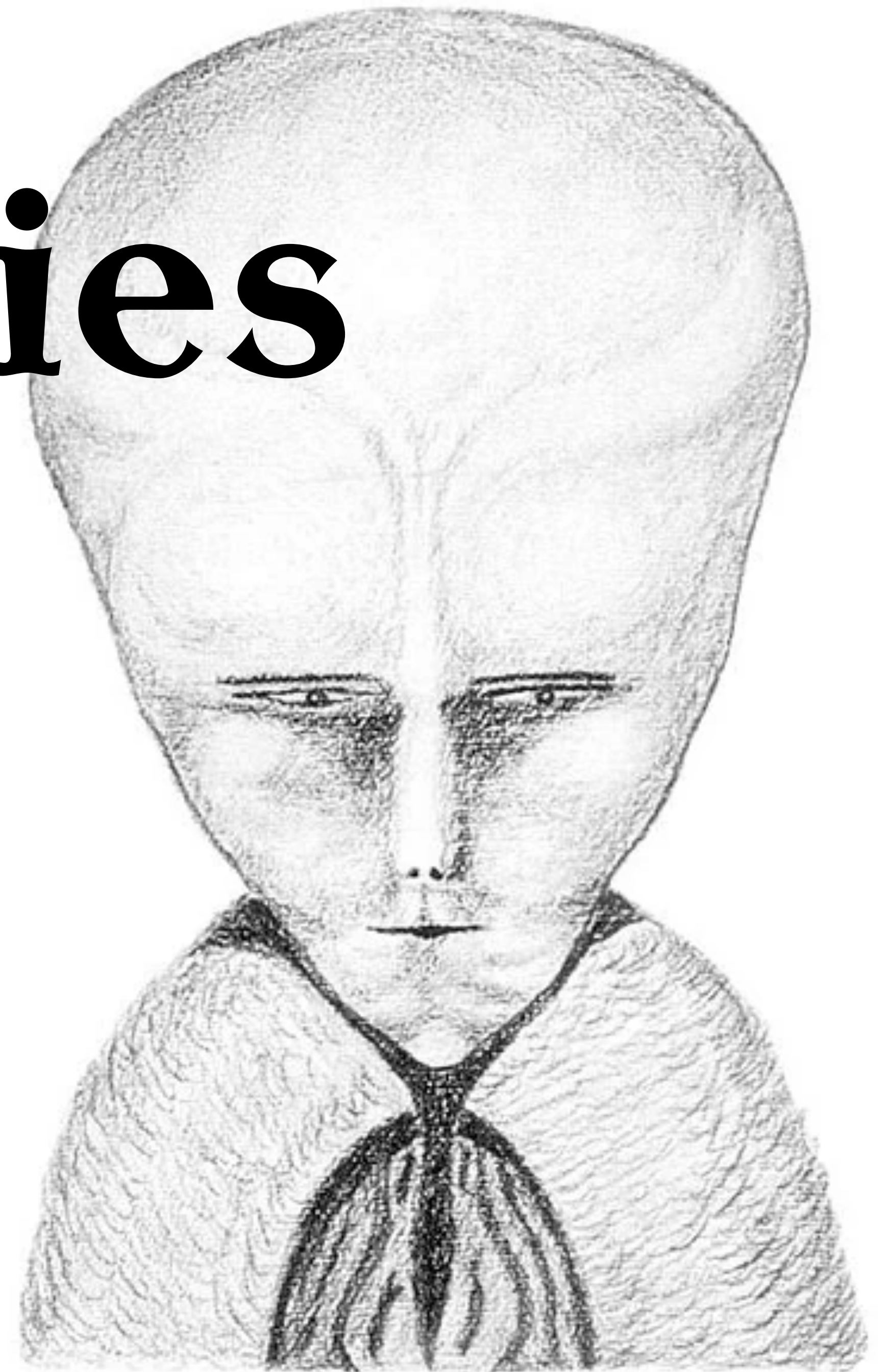
drop monitoring
= strategic automation



Entities



SABNOCK





DMN

Default Mode Network

Self-referential processes, autobiographical memory, future planning. Hyperactive in mind-wandering; suppressed in deep trance (hypnosis).

ECN

Executive Control Network

Goal-oriented behaviour, cognitive control, attention. Reduced DMN–ECN connectivity → heightened suggestibility during ASCs.

SN

Salience Network

Emotional control; switches between self-referential and goal-directed modes. Low activity linked to prolonged mind-wandering.

01

**Reduced
DMN-ECN
Connectivity**

Jiang et al., 2017; Deeley et al., 2012



02

**Increased
Suggestibility**

Pekala et al., 2010; Wieder et al., 2022



03

**Enacted
Entity
Behaviours**

Wolfradt, 1997; Morton, 2017

01

Reduced DMN–ECN Connectivity

During ASCs, functional connectivity between the Default Mode Network and Executive Control Network decreases.

Self-referential processing weakens; critical cognitive control is disengaged.

Jiang et al., 2017; Deeley et al., 2012



02

Increased Suggestibility

Weakened executive control allows cultural expectations and personal beliefs to flood in unchecked.

The individual becomes highly receptive to external cues defining how a 'possessed' person behaves.

Pekala et al., 2010; Wieder et al., 2022



03

Enacted Entity Behaviours

The 'possessed' individual performs culturally scripted behaviours stereotypical of the possessing entity.

Alterations in memory recall mirror post-trance amnesia and DID inter-identity amnesia.

Wolfradt, 1997; Morton, 2017

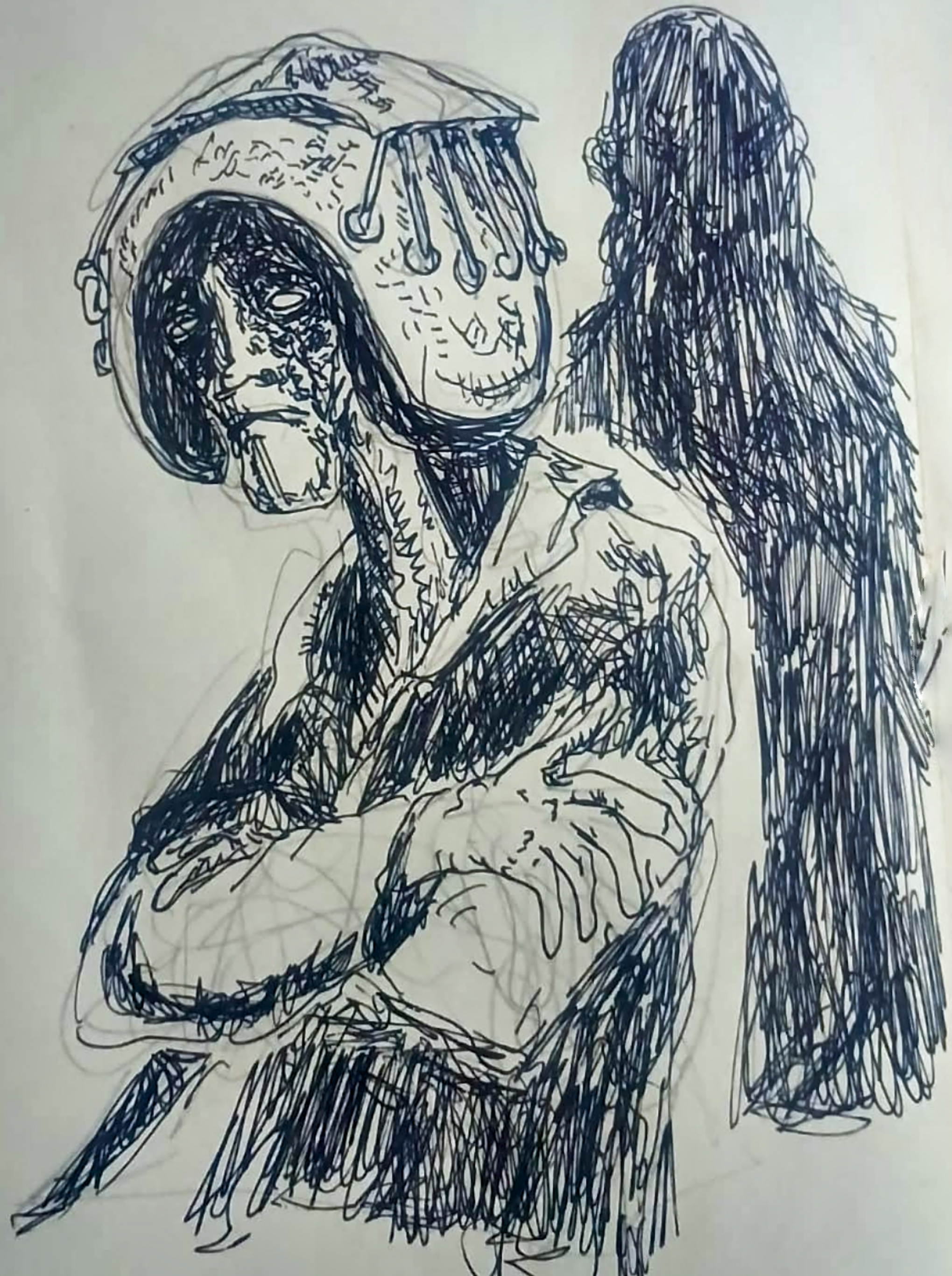


Figure 1 - Persinger's "God Helmet"


Persinger MA, Tiller SG. Case report: A prototypical spontaneous 'sensed presence' of a sentient being and concomitant electroencephalographic activity in the clinical laboratory. *Neurocase*. 2008;14(5):425-30. doi: 10.1080/13554790802406172. Epub 2008 Sep 26. PMID: 18821169.

slotted angle frame (40mm x 40mm)

NOTE: All dimensions in mm


--- white fabric or solid covering, supported by frame

Camera and dimmable light above

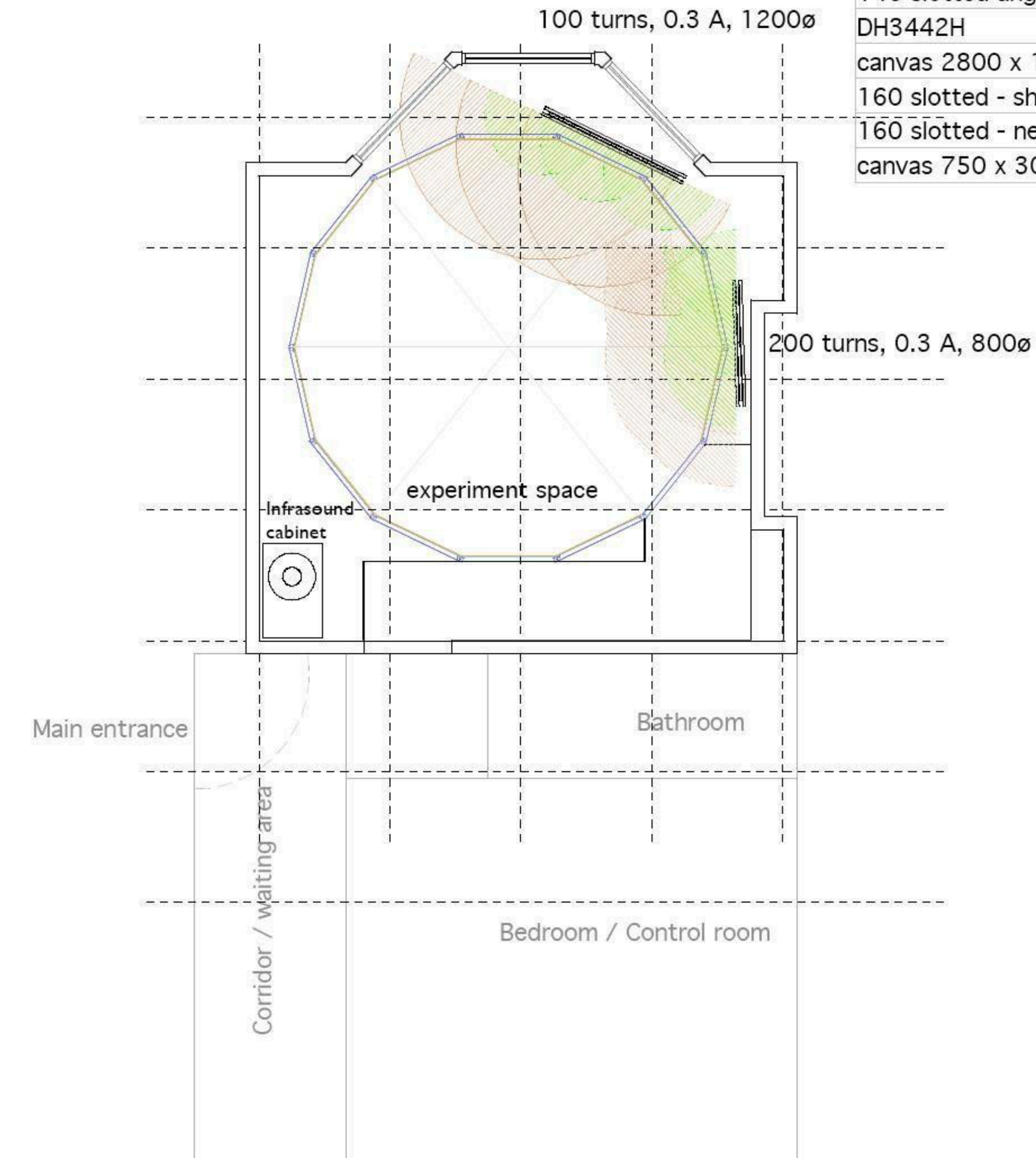
 approx. area EMF output higher than 25uT

Floor: grey carpet

Ceiling: similar to walls

 approx. area EMF output higher than 5uT

Symbol Name	Qty
	146 146
140 slotted angle	36
DH3442H	3
canvas 2800 x 150	11
160 slotted - short	55
160 slotted - new	28
canvas 750 x 3000	13



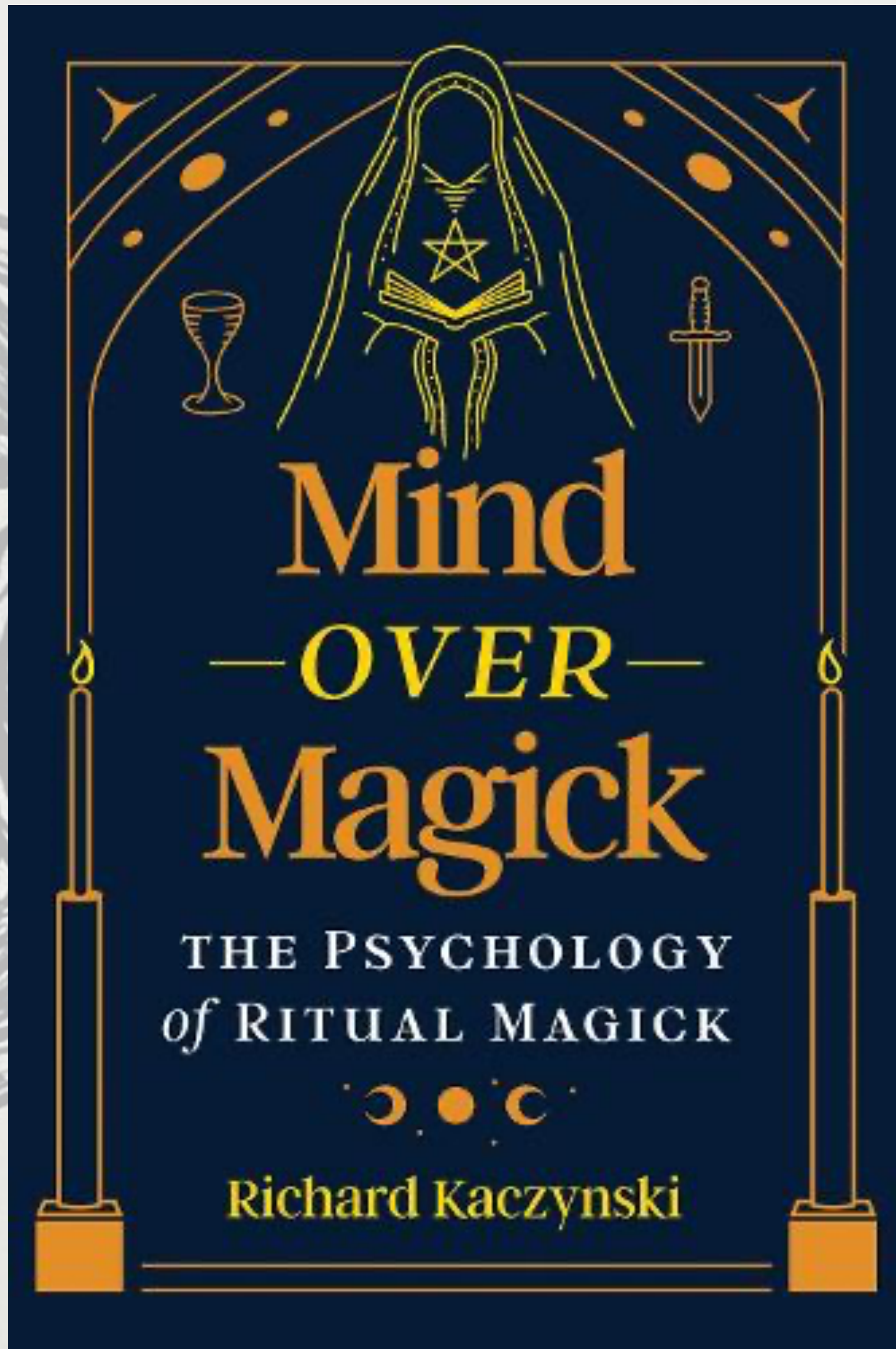
French CC, Haque U, Bunton-Stasyshyn R, Davis R. The "Haunt" project: an attempt to build a "haunted" room by manipulating complex electromagnetic fields and infrasound. *Cortex*. 2009 May;45(5):619-29. doi: 10.1016/j.cortex.2007.10.011. Epub 2008 Jun 5. PMID: 18635163.

But if it is
real?

Marian Apparitions & John Dee's Revelations

SIMILARITIES

Category	Marian Apparitions	John Dee's Revelations
Luminous figures	Apparition as radiant, glowing presence <i>(Soubirous 1858; Zimdars-Swartz 1991)</i>	Angels as bright, shining beings in the crystal <i>(Casaubon 1659, pp. 1–5)</i>
Apocalyptic message	Warnings of divine punishment, fate of nations <i>(Lucia, Memórias 1941)</i>	End times, catastrophe if mission fails <i>(Casaubon 1659, pp. 185–190)</i>
Secrets & hidden knowledge	Hidden messages reserved for the Pope <i>(Three Secrets of Fátima)</i>	Enochian language — encoded, restricted <i>(Dee, MS. Sloane 3188, BL)</i>
Go to a ruler	Visionary must reach the bishop / Pope <i>(Bernadette → Bishop Laurence)</i>	Commanded to visit Rudolf II & Stephen Báthory <i>(Casaubon 1659, pp. 92–97)</i>
Teach & spread the message	Spread the Rosary, promote conversion <i>(Laurentin 1990)</i>	Preserve & transmit Enochian tables and keys <i>(Szőnyi 2004, pp. 201–210)</i>
Convert / reform the world	Consecrate Russia; universal peace <i>(fulfilled by John Paul II, 1984)</i>	Reunify divided Christianity post-Reformation <i>(Harkness 1999, ch. 4)</i>
Cost to the visionary	Suffering, illness, early death <i>(Jacinta & Francisco Marto, d. 1919–20)</i>	Ruin, exile, family breakdown <i>(Woolley 2001, pp. 246–260)</i>





Pawilon 5A Stoisko K23